

### FLOOR PLAN LEGEND & SHEET NOTES

PARTITION LEGEND	
	EXISTING CONSTRUCTION TO REMAIN
	NEW CONSTRUCTION - NON RATED
	EXISTING ONE HOUR FIRE BARRIER
	ONE HOUR FIRE RATED BARRIER
	FIRE EXTINGUISHER CABINET
	WALL-MOUNTED FIRE EXTINGUISHER
	CARD READER ACCESS CONTROL DEVICE
	DOOR ACTUATOR PUSH BUTTON
	WALL MOUNTED INSTRUMENT BOARD; REFER TO ELEVATIONS FOR MOUNTING HEIGHT. PROVIDE BLOCKING AS REQUIRED.
	CEILING MOUNTED CURTAIN TRACK
	COAT HOOK
	WALL MOUNTED TV. PROVIDE BLOCKING AS REQUIRED.
	OUTSIDE SCOPE OF PROJECT

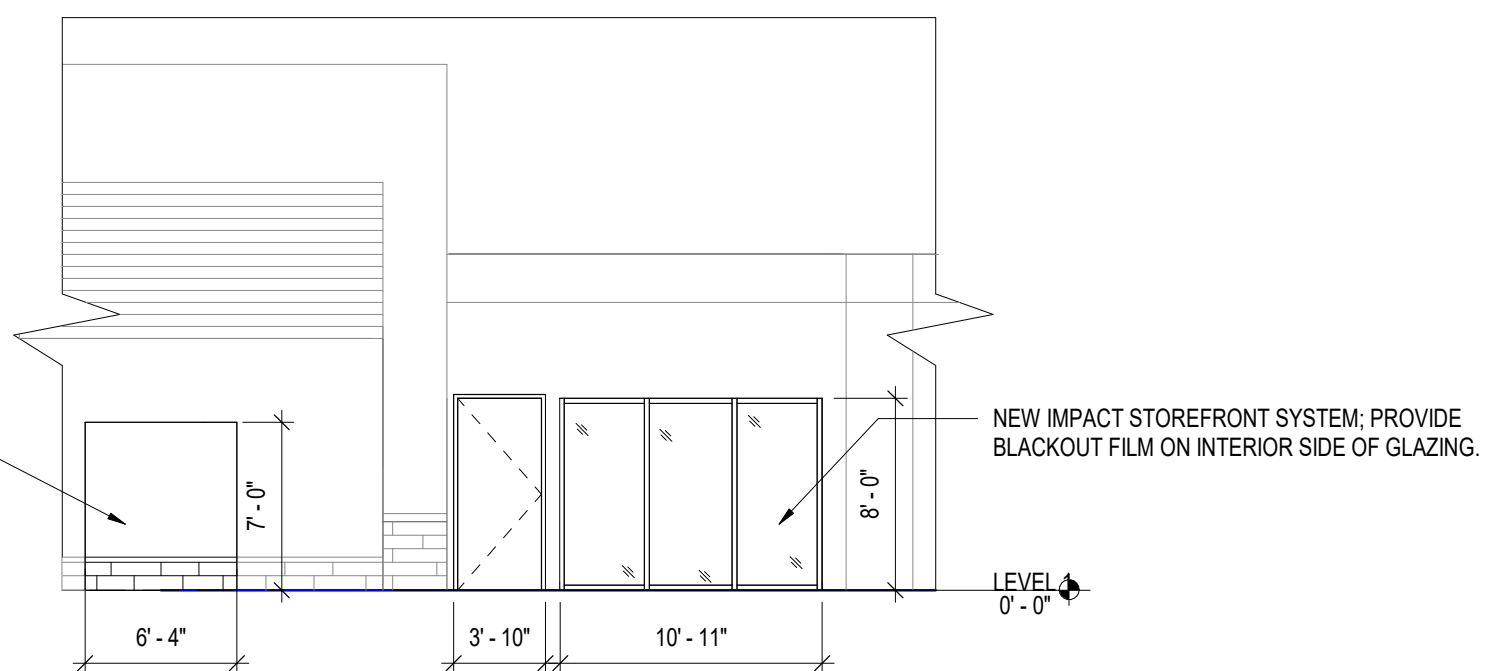
**NOTE:** REFER TO PARTITION TAGS ON PLANS AND PARTITION TYPE DETAILS. REFER TO THE ACCESSORY EQUIPMENT SCHEDULE (SHEET A103) AND TOILET MOUNTING HEIGHTS (SHEET G003).

### GENERAL SHEET NOTES

- COMPLY WITH THE REQUIREMENTS OF THE FOLLOWING NOTES IN THIS SET OF DRAWINGS WHICH ALSO APPLY TO THE NEW CONSTRUCTION AND DIMENSION FLOOR PLANS:
  - A. "GENERAL NOTES" ON THIS SHEET
  - B. "GENERAL NOTES FOR DEMOLITION PLANS" ON SHEET AD101
  - C. "GENERAL NOTES FOR REFLECTED CEILING PLANS" ON SHEET A102
- EXISTING-TO-REMAIN PARTITIONS/BARRIERS, DOORS, WINDOWS, PLUMBING FIXTURES, CABINETWORK/CASEWORK, EQUIPMENT, ETC., ARE "SCREENED-BACK" AND ON NEW CONSTRUCTION AND DIMENSION PLANS ARE INDICATED BY SOLID LINES. REFER TO DEMOLITION FLOOR PLANS FOR EXTENT OF "EXISTING-TO-BE-REMOVED".
- ITEMS DENOTED ON THE NEW CONSTRUCTION FLOOR PLANS WITH A DASHED LINE OR DOTTED LINES ARE BEING FURNISHED BY THE OWNER OR INDICATE ITEMS OVERHEAD. (COMPLY WITH THE REQUIREMENTS OF "GENERAL DETAILS" ON GENERAL DETAILS AND ADA MOUNTING HEIGHTS SHEET).
- SEE REFLECTED CEILING PLANS FOR LOCATIONS OF GYPSUM BOARD FURR DOWNS AND SOFFITS.
- REFER TO SHEET A501 FOR DETAILS WHICH APPLY TO THE FLOOR PLANS.
- SEE INTERIOR DESIGN DRAWINGS FOR INTERIOR FINISHES AND FOR LOCATIONS OF ACCENT WALLS AND WALL PROTECTION.
- PROVIDE 5/8 INCH TYPE "X" GLASS MAT PAPERLESS INTERIOR GYPSUM BOARD AT WET LOCATIONS.
- WHERE DEMOLITION OF CERTAIN ITEMS RESULTS IN UNPROTECTED OPENINGS OR PENETRATIONS IN EXISTING-TO-REMAIN FLOORS, WALLS, CEILING, ROOFS, ETC., REPAIR SUCH OPENINGS AND PENETRATIONS AS REQUIRED TO MEET ORIGINAL FIRE PROTECTION, SOUND AND STRUCTURAL REQUIREMENTS.
- FOR ADDITIONAL DIMENSIONING, COMPLY WITH REQUIREMENTS ON ENLARGED PLANS, WALL SECTIONS, INTERIOR ELEVATIONS, PLAN DETAILS AND SECTION DETAILS.
- DO NOT SCALE THE DRAWINGS. IF DIMENSIONS ARE IN QUESTION, OBTAIN CLARIFICATION FROM THE ARCHITECT IN WRITING PRIOR TO CONTINUING WITH CONSTRUCTION.
- DIMENSIONS SHOWN ON THE FLOOR PLANS ARE: TO FACE OF STUD AT METAL STUD PARTITIONS/BARRIERS OR TO OUTSIDE FACE OF EXISTING WALLS. EXTREMELY CRITICAL MINIMUM DIMENSIONS MAY BE INDICATED AS "MINIMUM", "CLEAR", OR "MINIMUM CLEAR".
- CRITICAL NOTE: TAKE INTO ACCOUNT THE THICKNESSES OF THE SCHEDULED FINISH MATERIALS PRIOR TO "LAYING OUT" METAL STUD PARTITIONS/BARRIERS, SINCE THE TOTAL "OUT-TO-OUT" WALL THICKNESS MUST BE CONSIDERED SO THAT THE REQUIRED "MINIMUM FACE-OF-FINISH" AND "MINIMUM CLEAR FACE-OF-FINISH" DIMENSIONS CAN BE MAINTAINED AFTER THE INSTALLATION OF THE FINISH MATERIALS.
- INTERIOR METAL STUD PARTITIONS/BARRIERS SHALL BE CONSTRUCTED OF 3/8" (MINIMUM) METAL STUDS (OR AS SHOWN BELOW) UNLESS NOTED OTHERWISE. COMPLY WITH U.L. DESIGN NO. U444 OR U458 AT RATED PLUMBING WALLS/BARRIERS.
- WHERE NEW GYPSUM BOARD PARTITIONS/BARRIERS ARE A CONTINUATION OF AN EXISTING WALL OR COLUMN ENCASEMENT, THE FACE OF NEW GYPSUM BOARD SHALL BE ALIGNED WITH FACE OF EXISTING SURFACE. WHERE A ONE-HOUR RATED BARRIER OR A NON-RATED PARTITION IS SHOWN AS A CONTINUATION OF A TWO-HOUR RATED BARRIER OR COLUMN ENCASEMENT, THE OUTSIDE FACE OF GYPSUM BOARD SHALL BE PROVIDED (AS REQUIRED) TO PROVIDE FACE ALIGNMENT OF GYPSUM BOARD) WHILE MAINTAINING THE REQUIRED RATED INTEGRITY.
- TYPICAL PARTITION TYPE IS "A" UNLESS OTHERWISE NOTED.
- PATCH ANY EXISTING TO REMAIN WALLS AND RESKIM/REFINISH WALL SURFACE. REPAINT ANY EXISTING TO REMAIN WALLS, HOLLOW METAL DOOR FRAMES AND TRIM.

### FLOOR PLAN KEYNOTES

- F1 ALIGN NEW WALL TO EXISTING.
- F2 PROVIDE IN-WALL BLOCKING FOR WALL MOUNTED TV. SEE (C1/A401) FOR MOUNTING HEIGHT.
- F3 PROVIDE PLYWOOD SHEATHING IN ALL REQ. SIDES TO 8'-0" A.F.F. REFER TO FINISH SCHEDULE FOR PAINT FINISH
- F4 INFILL WITH 8" THICK REINF. CONC. SLAB. MATCH EXISTING EXTERIOR WALL ASSEMBLY AND PAINT.
- F5 NEW IMPACT STOREFRONT SYSTEM; PROVIDE BLACKOUT FILM ON INTERIOR SIDE OF GLAZING. SEE ELEVATION



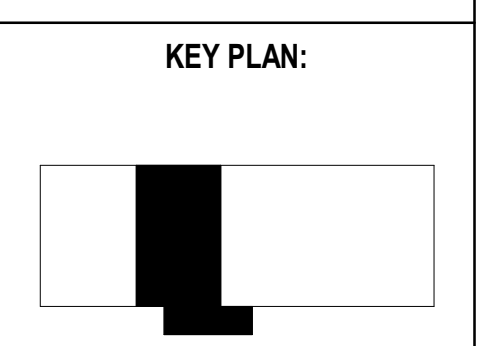
**A4** NEW WALL, DOOR AND STOREFRONT ELEVATION  
SCALE: 1/8" = 1'-0"

**A1** 1ST FLOOR PLAN  
SCALE: 3/16" = 1'-0"



**PROJECT TITLE:**  
KILLEARN

**PROJECT ADDRESS:**  
1415 TIMBERLANE RD.  
TALLAHASSEE, FL 32312



REVISIONS		
NO.	DESCRIPTION	DATE

DATE ISSUED: 06/08/2022  
REVIEWED BY: M/VT  
DRAWN BY: DG/JSKN  
DESIGNED BY: DGMV

PROJECT NUMBER:  
**5011012001**  
© 2022 RS&H, INC



SHEET TITLE:  
OVERALL FIRST FLOOR PLAN

SHEET ID:  
**A101**

PROJECT STATUS:  
100% CONSTRUCTION DOCUMENTS